



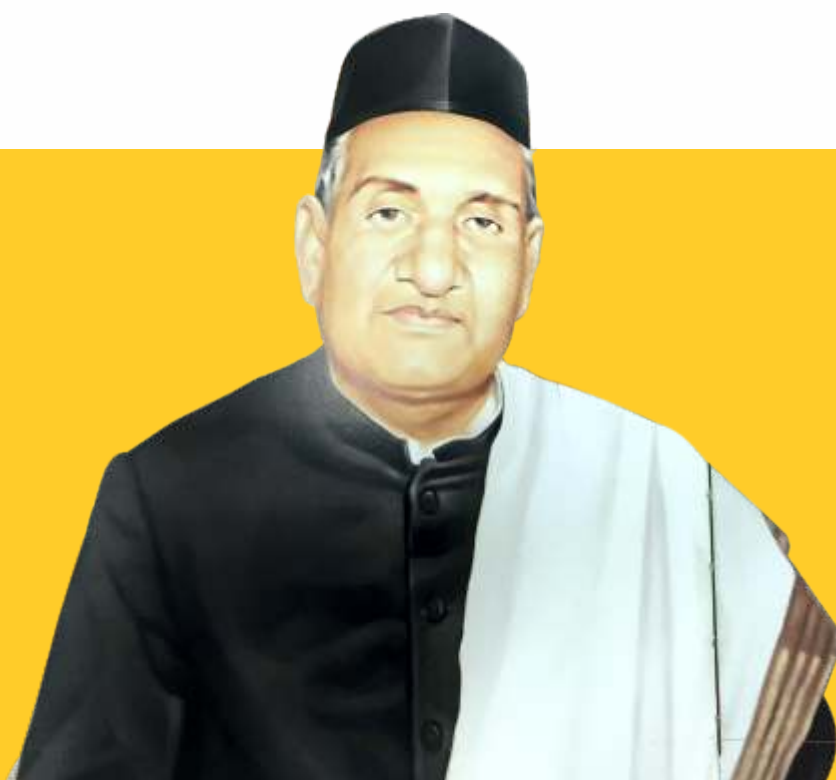
GLA
UNIVERSITY
MATHURA
Recognised by UGC Under Section 2(f)

Accredited with **A** Grade by **NAAC**



SESSION
2020-21

Our Inspiration



Late Shri Ganeshi Lal Ji Agrawal
1910-1977

प्रवर्तनीया सद्विद्या भुवि यत्सुकृत् महत्

"True knowledge should be promoted all over the world
as it is the most noble and pious work."

The inspiration, the value, the belief, the standard and the vision enshrined in the above quotation come from the noted philanthropist and social worker, Late Shri Ganeshi Lal Ji Agrawal. The spark he ignited has slowly but surely transformed into an illuminating star guiding those who aspire to seek excellence in learning and education.

Narayan Das Agrawal
Chancellor

From the desk of The Chancellor



Over the past two decades, GLA University has acquired a reputation of imparting quality education at GLA, we strive to offer all our students with an all-round professional development backed by a strong network of placement partner companies and a plenty of opportunities to follow extra-curricular interests.

Our pursuit for holistic development of our students is supported by our interactive and engaging teaching pedagogy. Convention and modernity come together at GLA to offer 'the best' to our students. We welcome you to explore our world-class infrastructure and amenities. With a thriving learning atmosphere filled with camaraderie, at GLA we aspire to provide students with a true Ivy League University experience.

Prof. Phalguni Gupta
Vice-Chancellor

Message from The Vice-Chancellor

It is a matter of immense pleasure for me to be a part of the GLA University, Mathura family as its Vice Chancellor. I take this opportunity to welcome students coming from all parts of the world, to join in our academic programmes. Most of such students have come from the folds of their family to another in their quest of knowledge. Henceforth, one needs to feel that their teachers, seniors and peers form an extended family from whom they get full guidance, support and help to move ahead in life as professionals in the programmes they have opted.

The university has young faculty members who are highly qualified in their fields of expertise. Our faculty members publish their research outcome in high impact factor journals of repute on a regular basis. There is an active interaction between faculty and students in the campus. The learning experiences in the campus pave a strong path for enhancement of overall development of the learners.

The university organises a large number of national and international conferences, seminars and workshops every year. Organising such type of events helps to provide not only a variety of experiences to the students but also gets an opportunity to inculcate skills such as leadership and team spirit which are helpful in their career. This beautiful campus of the university is fully ICT enabled and provides an excellent e-learning platform. Its curriculum along with co-curricular and extra-curricular activities gives a true opportunity to shape physical, mental and intellectual growth of students.

I, on behalf of the University family, assure that the university will help you to pursue your objectives of life under the varied social, cultural and economic environment and make the University family proud of your attainments.





About Us

In the year of 1998, the first step was taken by Shri Narayan Das Agrawal to fulfil his father's dream by establishing GLA Institute of Technology and Management. It went on to take the shape of GLA Group of Institutions and finally became GLA University in the year of 2010 through the U.P. State Legislative Act of 2009 (UP Act 21 of 2010). The University is recognized by UGC under section 2(f). GLA University is also a member of Association of Indian Universities (AIU) and Educational Member of IACBE (International Assembly of Collegiate Business Education).

Home to over 12000+ students, the university provides education at Diploma, Undergraduate, Postgraduate and Doctoral levels in various disciplines of Engineering, Management, Commerce, Diploma, Legal Studies, Biotechnology, Pharmacy, Agriculture, Sciences & English, and Education.

More than 550 well-qualified and experienced faculty members and 700 dedicated staff members work full-time for professional and all-round development of students. With a 26000+ strong alumni network all over the world, GLA University enjoys a special integration with corporate world, which helps to develop industry ready curriculum & pedagogy and the placement of students.

CITY ADMISSION OFFICES

State	Office Name	Contact No.
Bihar	Bhagalpur	+91-8171128356, +91-8449431935
	Muzaffarpur	+91-9473455001, +91-7250365002
	Patna	+91-9557607724, +91-8534907971
Haryana	Faridabad	+91-9996368334, +91-9389280175
Jharkhand	Ranchi	+91-7008435114, +91-9936694552
Madhya Pradesh	Bhopal	+91-8474901787
	Gwalior	+91-9568145600, +91-9012740002
	Indor	+91-9412159467, +91-9827813303
	Shivpuri	+91-8755447139, +91-9425489289
Rajasthan	Alwar	+91-8938017159, +91-8955391416
	Bharatpur	+91-9351591210, +91-7425862340
	Dholpur	+91-7302757020, +91-9389358977
Uttarakhand	Dehradun	+91-7302008809, +91-9927763376
Uttar Pradesh	Agra	+91-7078535454, +91-8923230441
	Aligarh	+91-7078289548, +91-7895484649
	Allahabad	+91-9557052979, +91-8840420832
	Banda	+91-9456009465, +91-8171089585, +91-8273845072
	Bareilly	+91-7078289636, +91-9568236377
	Basti	+91-8795453727, +91-8175074551
	Bulandshahr	+91-7467013841, +91-7078289838
	Etah	+91-7900542260, +91-8923300590
	Etawah	+91-9045288366, +91-7078289865
	Firozabad	+91-7078981831, +91-8194052534
	Gorakhpur	+91-6396211328, +91-6393776008
	Hathras	+91-9045349261, +91-9045324671
	Jhansi	+91-7500446622, +91-8979669911, +91-9997956957
	Kanpur	+91-8174059960, +91-8009509191
	Kasganj	+91-7037119023, +91-7078289896
	Lucknow	+91-6307363818, +91-7467079487
	Mainpuri	+91-7895799541, +91-7906358260, +91-8279761667
	Mathura	+91-8937099911, +91-6399020004, +91-6399020005
	Meerut	+91-7060239364, +91-7060239335
	Moradabad	+91-7302254835, +91-6399050009
	Muzaffanagar	+91-7409833985, +91-7409833987
	Noida	+91-9560800670, +91-8077503479, +91-9457311555
	Orai	+91-8171630011, +91-8171633514, +91-9109234138
	Varanasi	+91-7992131676, +91-7275010306
Assam	Guwahati	+91-9435059373, +91-8135831947



Kajal Jawla
(B Tech - EC - 2010)
IAS
Government of India



Rajat Chaturvedi
(B Tech - CS - 2012)
IPS
Government of India



Kumar Dharmendra
(B Tech CS - 2013)
PCS



Bhupesh Narain
(B Tech - EC- 2004)
Pilot
Air India



Anjani Pandey
(B Tech ME - 2011)
IPS



Aashish Bansal
(B Tech - EE - 2002)
Group Supervisor
Bechtel Oil Gas &
Chemicals



Deepak Sanadhya
(MBA - 2004)
Director Asia Business
Jedox



Rahul Pathak
(B Tech - EC - 2004)
Scientist
ISRO



Himanshu Katiyar
(B Tech EE-2014)
IES
Government of India



Sonveer Tomar
(B Tech CS-2017)
SDE
CISCO



Amit Mishra
(B Tech EC - 2011)
Post Treasury Officer

Some of **Our** Distinguished **Alumni**



Dhananjay Singh
(B Tech EC- 2002)
Deputy Director
ZTE Telecomm JuxPux Pvt Ltd



Kamendra Tripathi
(B Tech EC-2005)
Scientist, ISRO, Lucknow



Shradha Pratap Singh
(MBA-2004)
Manager-Service
Procurement
IndusInd Bank, New Delhi



Sachin Kumar
(B Tech ME-2013)
IAS



Mehul Garg
(B Tech EC - 2012)
Sr. CAE Analyst
Mercedes Benz India
Pvt Ltd.



Sanchit Garg
(B Tech EC-2009)
IES



Himanshu Saraswat
(B Tech CS - 2017)
Member Technical Staff
Netapp Inc.



Ishu Agrawal
(B Tech EC - 2009)
STPI, Ministry of
Electronics and IT
Government of India



Chander Prakash
(B Tech ME - 2015)
IES
Government of India



Prashant Sharma
(B Tech IT-2010)
IAS



Bhupendra Goyal
(BBA - 2010)
Assistant Director
Ministry of Finance



Amandeep
(B Tech EC - 2017)
DSP
Govt. of Bihar



Uma Sharma
(B Tech EC-2007)
IRS



Hemant Upadhyay
(B Tech IT - 2009)
IPS



What **ALUMNI** says: MAKING INDIA PROUD



Adarsh Roy

(B Tech - EC - 2010) Senior Tech Lead,
Mercedes-Benz Research
And Development India Private Limited

"A strong structure can only be built on a strong foundation. My years at GLA helped carving my foundation and thus I do, and will always stand the test of time."



Anusha Tripathi

(B Tech - CS - 2011)
AVP, Bank of America

"I would always be grateful to my alma mater GLA University for providing me the multi-dimensional aspects of learning here. I experienced the world-class academics intermingled with industry-exposure and personality development skills. I would like to thank the faculty members of the University for their guidance which was beneficial at the time of getting my dream job in Infosys through campus drive. I always cherish the memories of studying in this University which focuses on career enhancement along with overall skill development



Augustya Sharma

(B Tech -ME - 2011)
Manager, Volvo Eicher

"At GLA University, dedication, sincere efforts and discipline are major pillars of success. Faculty members work as a catalyst to amplify the learning process with focus on professional growth. Well maintained library is the ocean of knowledge. Equal weightage to academics and extra-curricular activities ensure in all-round development of students. I recommend GLA University as a great place of learning for upcoming talents."



Bhupendra Goyal

(BBA-2010) Asst. Director,
Ministry of Finance

"The academic experience with a world class infrastructure and excellent faculty members at GLA University have infused me with a lifelong career excellence. The exceptional programmes and teaching methodologies backed by practical skills and industry interface have given me the confidence to pursue my career ahead."



PRAKHAR PRATAP SINGH

(BCA-2009) Project Management
Program Manager II, Amazon

"GLA not only imparts education but also adds value in our lives. I am enriched both as a student and as a professional.

GLA not only provided me with right analytical skills, knowledge practical application of the concepts, but also gave confidence to face the challenges in the business world and to follow ethics in my life. I feel proud of being a student of this prestigious institution."

GLA UNIVERSITY RANKS & ACCOLADES

Ranked #1 in UP
amongst
Best Private
Universities in 2020
by



Ranked #2 in UP
& #6 in INDIA
amongst all private
B-Schools Ranking 2020
by



Rated
AAA
amongst India's
Best Engineering
Colleges 2020
by



Accredited with
'A' Grade by



Ranked #1 in INDIA
amongst the top
Emerging Engg. Institutes
Survey in 2019
by



Awarded
Best Polytechnic
Institute among Polytechnic
Institutions across U.P.
by



Ranked #1 in UP
& #3 in INDIA
amongst
Best Private Universities
Survey 2017 by



7th University
/Institution in India
accredited by
IACBE (International
Accreditation Council for
Business Education)



Best University
for Placement
in India by



Ranked #1
University in UP
by



Best Private University
in
North India
by



Best Polytechnic
Institute in India
2017
by
CEGR in
World Education
and Skills Conclave



GLA R & D recognized by
SIRO, Govt. of India, New Delhi

Training & Placement

The department of Training and Placement is an integral part and backbone of the University. We at GLA, strongly believe in the creation of qualitative human resources with the training of intellectual minds. To help students stand-out and gain competitive edge, over the others, we emphasize development of both functional skills and exceptional practical outlook.

Focus is on placing students in various establishments according to their areas of interest and specialization, Numerous corporate interactions in the form of Guest Lectures, National Conferences, Workshops, Seminars, Webinars and industrial visits are held to enable students to understand real-life situations and experiences.

More than 250 companies visit GLA University every year offer jobs and placement opportunities as University provides up to 5 opportunities to student to select their career path.

Placement Ready Enhancement Program (PREP) through the training of verbal, numerical, logical and analytical skills leads students to become industry ready and enables them to face the interviews of various In-campus and Off-campus placement drives.



1700⁺ GLAians placed in 260⁺ MNCs (Batch 2020) & still counting...

₹32 Lakh

P.A. Highest Package Offered

74%

Placement Average over the past decade

₹5.08 Lakh

Per Annum Average Salary

600⁺

Alumni Working in fortune 500 Companies

623

GLAians Placed in Top 6 IT Companies

5000⁺

GLAians Working Abroad in the Top MNCs

54

Companies Offered ₹5 Lakh Per Annum

26000⁺

Alumni Working All Across the Globe



Top Recruiters @ GLA

amazon Microsoft



Microsoft

Offered

17

Placements to GLAians

at ₹9.08 Lakh P.A.

Average Salary Package

(Batch 2019 & 2020)



Course wise Top Recruiters

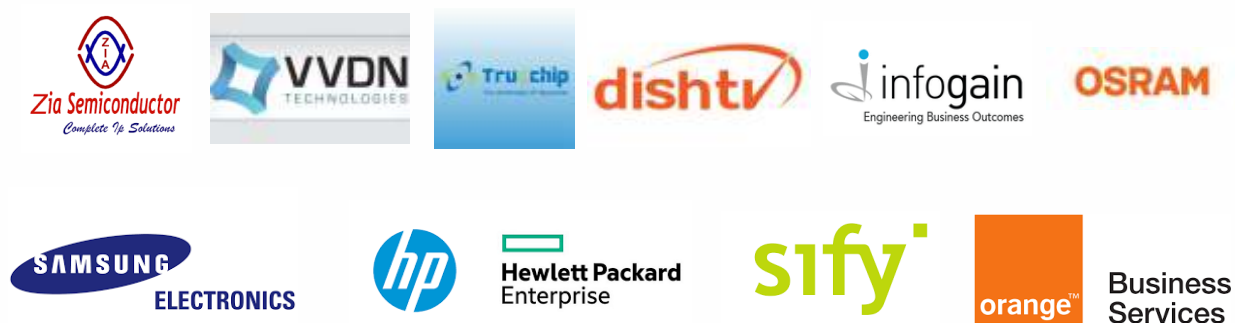
COMPUTER SCIENCE & ENGINEERING



ELECTRICAL ENGINEERING / ELECTRICAL & ELECTRONICS ENGINEERING



ELECTRONICS AND COMMUNICATION ENGG.



CIVIL ENGINEERING



MECHANICAL ENGINEERING



MANAGEMENT



PHARMACY / BIOTECHNOLOGY



DIPLOMA ENGINEERING



MoUs WITH ACADEMIA AND INDUSTRY

Top Placement Packages Batch 2020



International



National



Industry Tie-Ups

India's first 'Mission 10X Technology Learning Center' and 'Centre of Embedded System' was established for students run by Wipro at the University

The University has been bestowed with the 'Centre of Excellence' partnership by IBM

Industrial / Educational Visits

The University, through its Training and Placement Department visits various companies to facilitate practical assimilation arrangements of theory to its students. These visits are arranged across all the Institutes / Departments / Specializations. Such visits help the students broaden their perspectives in their chosen fields of study.

In addition to industrial visits, the students also get an opportunity to visit different places of historical importance and natural bliss.

INNOVATIONS @ GLA

ALL TERRAIN VEHICLE (ATV)

It is a project that has been accomplished by GLA University students who participated in competitions like Bajaj SAE, Mega ATV Championship and Enduro Student India (ESI). An ALL TERRAIN VEHICLE (ATV), also known as a quad, quadbike, three-wheeler, four-track, four-wheeler or quadricycle [as defined by the American National Standard Institute (ANSI)] is a vehicle that travels on low-pressure tires, with a seat that is straddled by the operator, along with handlebars for steering control. As the name implies, it is designed to handle a wider variety of terrain as compared to most other vehicles.



RC PLANE- A radio-controlled aircraft or RC Plane, is a small flying machine that is controlled remotely by an operator on the ground using a hand-held radio transmitter. The transmitter communicates with a receiver within the craft that sends signals to servomechanisms (servos) which move the control surfaces based on the position of joysticks on the transmitter. The main components of RC plane are Brushless Motor (BLDC), ESC, Servo, Propeller, Transmitter & Receiver, Battery etc.

PROTOTYPES DEVELOPED BY NewGen IEDC

A Go-Kart, also written as go-cart (often referred to as a kart simply), is a type of open-wheel car. It is a project accomplished by GLA University students who won 1st prize for best prototyping during 2017 -18 championship of NKRC (National Kart Racing Championship). Go-karts come in all shapes and forms, from motorless models to high-powered racing machines. Some, such as Superkarts, are able to beat racing cars or motorcycles on long circuits. Gravity racers usually referred to as Soap Box Derby carts are the simplest type of Go-Karts. They are propelled by gravity, with some races taking place down a single hill. Many recreational karts can be powered by four-stroke engines or electric motors. While racing karts one has to use a two-stroke or, rarely, higher powered four-stroke engines. Most of them are single seater but some recreational models can accommodate a passenger.



The basic idea of **Tred-E-Cycle** is to make a combination of tread mill and a bicycle. Further more, the E-cycle team wants to convert the bicycle into a motorized bicycle. In the current scenario, the automation projects available in the market automate things using time or pre-configuration methods but with Intelli Premises we will not achieve it in the same way. Rather we will automate things using Real Time Location based methods.

A Smart Bag is an intelligent product that connects physical objects to a dedicated mobile app. This enables the end users to keep track of their items. The product provides theft protection too when you travel. This product is helpful for parents when their children go to school or some other places. It helps in managing the items inside the bag and help in tracking them.

A Smart Bike Security System is a complete security package that secures your bike from unauthorized access .It has many additional features like real time location tracking, speed tracking, accident reporting, etc.

Solar Thermal Energy Storage in Building is used to detect and prevent the unauthorized access of thieves, burglars and robbers. It will detect unauthorized and unwanted movement in the secured areas. When it detects any unwanted obstacle in the sensors, it rings an alarm to notify the user about the threat.



IN-CAMPUS RUNNING STARTUP



Lab Collaborations



Civil Engineering

“Bentley Center of Excellence and Building Information Modeling (BIM) Advancement Lab in collaboration with Bentley Inc. and Spgeo Inc., is where students learn intelligent linking of individual 3D CAD components or assemblies (3D BIM) with time schedule constraints (4D BIM) and then with cost-related information (5D BIM).

Management PG

Name of Lab : Financial Markets Research Center
In collaboration of : OPUS College of Business, University of St. Thomas, Minneapolis, USA

Institute of Business Management took a stepping stone for learning of advance learners of finance at the department by establishing a Financial Markets Research Center in collaborations with OPUS College of Business, University of St. Thomas, Minneapolis, USA. This lab facilitates for the close to real time virtual trading simulation and access to various databases related to finance where students and researchers can excel their proficiencies in the domain of finance.

Name of Lab : Lieferkette SCM Simulation Lab
In collaboration of : Safeducate Learning Pvt. Ltd., New Delhi
In order to increase the real life exposure to students of logistics and supply chain management, Lifeerkette SCM Simulation Lab was established in collaboration of Safeducate Learning Pvt. Ltd., New Delhi. This lab facilitates for the acquaintance of advanced concepts of logistics and supply chain management in a close to real life simulated set up.

Centre of Excellence: Safeducate Centre of Excellence

In collaboration of : Safeducate Learning Pvt. Ltd., New Delhi
A centre of excellence has been established at Institute of Business Management in the field of logistics and supply chain management. The centre of excellence intends to offer real time corporate learning to MBA scholars about contemporary industry practices of the supply chain management. Under this industry tie up with Safeducate Learning Pvt. Ltd., New Delhi, (a subsidiary of Safexpress and a leading national logistics giant), a logistics specific course viz. MBA-LSCM is also offered.

Electrical Engineering

Name of Lab: Solar Energy Lab

In collaboration with: SIMPA Energy Pvt. Ltd.

Solar Energy lab was established in collaboration with SIMPA energy private limited for product development and testing/maintenance and product development of stand alone solar system. In this lab, students are able to perform analysis of solar cell at different light intensity, grid integration and at different conditions. They are able to understand the behavior of solar cell under different conditions like shadow effect, intensity effect, wind effect and position effect. Students have also developed various projects under this lab like dual – axis solar tracker, Maximum Power Point Tracker, etc. Major equipments of the lab are Solar PV Training & Research System, Solar PV Grid-Tied Training System.

Electronics & Communication Engg.

LabVIEW ACADEMY: LabVIEW system design software provides engineers and scientists with the tools they need to create and deploy measurement and control systems. The heart of the NI education platform, LabVIEW, helps students, teachers and researchers to build a wide range of applications in dramatically less time. It is the premier development environment for problem solving, accelerated productivity and continual innovation. It offers a graphical programming approach that helps you to visualize every aspect of application, including hardware configuration, measurement data and debugging.

TEXAS INSTRUMENT INNOVATION CENTRE: Texas instrument innovation center is established in the department to provide the knowledge and training in Robotics advance control and IOT. Along with hardware training kit, the training on MATLAB software is also provided. After training, students may be capable of designing MATLAB software based projects (mainly in communication tool box) and small projects based on IOT and Robotics.

VLSI DESIGN RESEARCH CENTER: Centre of Excellence for VLSI design offers complete Chip Design expertise from RTL to GDSII implementations at 45nm, 90nm, 180nm technology nodes including pre and post-silicon testing & amp; FPGA/Simulation-based prototyping. Expertise includes Front End Design and Verification as well as Backend Design and Physical Implementation.

Mechanical Engineering

Mechatronics Lab: Lab is equipped with the latest design, digital manufacturing, simulation, and lifecycle management software from Siemens Industry Software and state-of-the-art industrial equipment from Siemens Industry. It will give benefits to the students in terms of real-time programming of multiple process line operations with live demonstrations, practical concepts from a System Application using training kits, integrating Electrical, Electronics, Electro-pneumatics & Mechanical Engineering concepts for Applications to automations.

Micro-Nano Development Research Centre

(MNDRC): Nanotechnology is recognized as including promising new techniques that overcome the limitations posed by the conventional ones. currently there are plenty of nanotechnology applications in use, such as the composition of ultra-high functional materials, ultrafine fabrication, single-molecular measurement, and single-molecular operation. It was under these circumstances that the High-Tech Research Center was drawn up in the 2015 academic year with the goal of developing highly functional nano materials and researching micro-nano mechatronics devices. To achieve these research goals, we have established the Micro-Nano Development Research Center (MNDRC). With this approach, we have been successful in achieving our original goals.





E-Cell: The seeds of entrepreneurship usually get sown when students are still studying at a college or university. At GLAU, there had been a history of a handful of students trying to start a company of their own, but the efforts were often made solo and results were sporadic. In 2014, the University decided to create a platform to bring students, faculty and management on the same page, when it came to promote a startup culture in the University. This was timely also because the Indian Government had announced a Start-up India theme for youth.

Within 2 years, a student run and faculty mentored Entrepreneurship Cell took shape, and is currently managed by a 26 member Student Council with 1 President, 1 Vice President, 8 Functional Heads, 8 Associate Heads and 8 First Associates. The selection process for these posts is based on a written application, Group Discussions and Personal Interviews. There were about 145 applications for the 26 positions of the current Student Council.

Vision Statement: To become, by 2025, a vibrant hub of entrepreneurial activity in the Northern Indian region, such that local entrepreneurs drawn from students, faculty, staff and other local communities are able to incubate, nurture, and grow business ideas into full fledged companies with a high market presence. The Vision is to have at least 100 companies graduated from the GLAU E-Cell Incubator by 2025.

New Generation Innovation and Entrepreneurship Development Cell is a platform where every innovative idea is welcomed and nourished to help it grow into a successful business. It is fully supported by *NSTEDB, DST, Govt of India.

- At NewGen IEDC, we intend to promote innovative ideas of our students in the region and convert them into viable products and services.
- We are proud to have support for the innovators up to Rs. 2.5 lakhs in new and innovative ideas.

In this short but beautiful journey of Entrepreneurship Cell, we are proud to say that we have accomplished many achievements.

Some of our achievements are mentioned below:-

- 1 We are one of the 9 Incubators for a program called "Incubation of Incubators"
- 2 We are enlightened to gain the trust of over 1200 students in our college.
- 3 We organise many exciting and fun events on our premises where many Motivational Speakers, Change Makers, and Entrepreneurs address our students.
- 4 Licensed TEDx, Mock Auctions, and IDEATE Workshops are some of our prime events.

INFRASTRUCTURE

More than 110 acres of lush-green area earmarks the University campus. The campus is a home to 12000+ students who study in various professional courses at the University. The University premises are comparable to some of the best institutions across the nation, thus, adding much credence to its overall rating among the stakeholders. State-of-the-art buildings, world-class Laboratories, commendable on campus facilities, well-maintained infrastructure deserve a special mention in the overall scheme of things.



CENTRAL LIBRARY

The central library has more than one hundred & fifty thousand books, journals, magazines, newspapers, encyclopedias and thousands of CDs focusing on the vast areas of knowledge. Each department has its own well-stocked library apart from the central library. Being a member of DELNET, the University has access to more than two crore bibliographic records, 36 thousand-plus periodicals, number of CDs and e-books. Air-conditioned reading rooms in the central library remain open till midnight. The Central Library is fully automated using KOHA-Integrated Library Management System and linked with libraries of many reputed institutes and universities. This facility enables to the users to search the collections of different libraries.



COMPUTING FACILITIES

Every department has 'Classle Classes' to help the students learn anytime & anywhere around the campus through online lectures.

INTERNET FACILITY

Students at GLA can avail internet facility on all the computers in the laboratories as well as in their hostels through 2GBPS bandwidth.

NETWORKING & AUTOMATION

All the computers in the University are connected through a campus-wide LAN. There is a wide variety of dedicated servers installed to manage the various functions of the University like Mail Server, MIS & Students Records Maintenance, Office Automation, File Server etc. A strong firewall has also been placed to secure the network from third-party

RESIDENTIAL FACILITIES

(HOSTELS)

The hostel wings are akin to 'home away from home' for the students. The boys' and girls' hostels function separately. Full-time resident doctors, along with part-time specialists, keep a vigil on the health and related aspects of the students. Counselors take care of the psychological needs. Two departmental stores take care of the daily needs of the students. Round-the-clock uninterrupted electricity and water supply (along with RO water for drinking purpose) are provided. CCTV cameras and security guards keep a close watch and monitor the activities in the campus round-the-clock.

LECTURE ROOMS

All the class rooms at GLA University are equipped with latest audio-visual teaching aids, viz, LCD Projectors, PA Systems etc. Each class room is connected with both intranet as well as internet facilities. Every lecture hall and conference hall in the University is air-conditioned.

Welcome
to the world class
infrastructure &
amenities





SAFETY & SECURITY

To ensure proper safety & security on the campus, a team of well-trained guards and supervisors remain available round-the-clock around the premises. The University is under 24x7 surveillance with the help of hi-tech CCTV cameras. The University observes fire prevention norms with modern fire fighting equipments and vehicles.



DEPARTMENTAL STORES

The University has two departmental stores. The stores stock items of stationery and basic daily needs of students. Those who reside in the hostels of the University, find it convenient to shop for a range of articles from stationery to toiletries.



CAFETERIA & CANTEEN

The University has two cafeterias. Each remains open almost 16 hours a day serving students with nutritious and delicious food & beverages. Apart from the cafeterias, there are a few canteens which run within the precincts of various institutes / departments and provide students with basic refreshment options during the working hours of the University.



TRANSPORTATION FACILITY

The University offers a strong fleet of 40+ buses which provide to and fro conveyance service to students residing in and around Mathura, Vrindavan and Kosi.

BANKING & ATM

To serve the banking needs of the students, Indian Overseas Bank operates as a full-fledged bank branch along with ATM facility within the University campus.



MEDICAL FACILITY

A team of well-qualified doctors and paramedical staff is available at the campus dispensary. Emergency services like ambulance, bed equipped clinic etc. are available at all times. Apart from it, various specialists visit the campus frequently. Various apparatuses are also available in the University dispensary to take care of medical emergencies.

BASIC AMENITIES

For providing safe drinking water, RO Systems, connected with water coolers, have been installed in every building of the campus. In order to provide round-the-clock electricity, three generator-sets of 500 KVA each, remain operational on the campus. Cleanliness is given utmost importance and maintenance activities are continuously monitored by the House Keeping department.



AROHAN

Inter College/University Annual Fest

UDAAN

Wings for Underprivileged Child Education

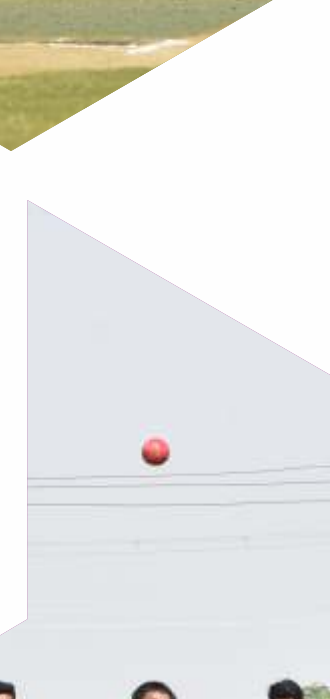
ABHYUDAYA

Inter-Polytechnic Technical Fest

AGRATA

Annual Management Carnival

Beyond ACADEMICS



SPORTS

The University provides facilities for playing outdoor games like Cricket, Football, Tennis, Basketball, Volleyball, etc. The outdoor games are complemented by an array of indoor games such as Badminton, Table Tennis, Carrom, Chess etc. Yoga classes are also arranged to enable students to be physically & mentally strong. To encourage sportsmanship, the University organises 'MAITREE' - Annual National Sports Meet.

CLUBS FOR EXTRACURRICULAR ACTIVITIES

The University has various clubs for promoting extracurricular activities on the campus. These are: Photography, Music, Dance, LAN Gaming, Management Games, Quiz, Debate, Literary Club, Nature Club, Art Club, Drama, and Robotics.

Certain Institute / Department level clubs are E-SOC, E-CELL, YANTRIKI, CSI CHAPTER, ASME CHAPTER, GIZMO, CODE-E-PHOBIA, MIND- BOGGLERS, UNNATI, etc.

These clubs provide a platform to all students to discover and subsequently nurture their talents, thus assisting in the development of their overall personality.

JHOOM

Cultural Extravaganza

SRIJAN

National Inter-School Competition

MAITREE

Annual National Level Sports Meet

TECHNOTSAV

Annual Tech Fest

SPANDAN

Annual University Gala

Details of COURSES OFFERED

Name of Course	Duration	Branch/ specialization	Eligibility*	Admission Process	Academic Fees	Scholarship
B Tech	4 Yrs.	Civil Engineering, Computer Science & Engineering, Electrical Engineering, Electronics and Communication Engineering, Electrical & Electronics Engineering, Mechanical Engineering, Automobile Engineering, Mechatronics Engineering	Passed 10 + 2 examination with Physics and Mathematics as compulsory subjects along with Chemistry / Computer Science. With at least 50% marks in the above subjects, taken together and 50% marks overall	On the basis of performance in GLAET (An online MCQ test of 120 minutes)	Rs. 80,500/- per academic sem. OR Rs.1,58,000/- per academic year	A scholarship worth Rs. 33,000/- per annum for candidates with more than 90% marks. Rs. 25,000/- per annum for candidates with more than 80-89% marks in Physics, Chemistry & Mathematics at 10 + 2 level as per eligibility requirement. Scholarship on the basis of JEE-MAINS score are as mentioned below: <div> <div>Percentile Score</div> <div>Scholarship amount</div> <div>95-100</div> <div>Rs. 74,000/-</div> <div>90-94.99</div> <div>Rs. 37,000/-</div> <div>85-89.99</div> <div>Rs. 20,000/-</div> </div>
B Tech - CS In academic collaboration with IBM	4 Yrs.	Data Analytics, Clouds Computing & Virtualization, Cyber Security and Forensics, Artificial Intelligence and Machine Learning	Passed 10 + 2 examination with Physics and Mathematics as compulsory subjects along with Chemistry / Computer Science. With at least 60% marks in the above subjects, taken together and 50% marks overall	On the basis of performance in GLAET (An online MCQ test of 120 minutes)	Rs. 98,000/- per academic sem. OR Rs.1,93,000/- per academic year	Same as above
B Tech - CS with DCS	4 Yrs.	Industrial IOT	Passed 10 + 2 examination with Physics and Mathematics as compulsory subjects along with Chemistry/ Computer Science. With at least 50% marks in the above subjects, taken together and 50% marks overall	On the basis of performance in GLAET (An online MCQ test of 120 minutes)	Rs. 95,500/- per academic sem. OR Rs.1,88,000/- per academic year	Same as above

Name of Course	Duration	Branch/ specialization	Eligibility*	Admission Process	Academic Fees	Scholarship
B Tech - ME with DCS	4 Yrs.	Smart Manufacturing	Passed 10 + 2 examination with Physics and Mathematics as compulsory subjects along with Chemistry / Computer Science. With at least 50% marks in the above subjects, taken together and 50% marks overall	On the basis of performance in GLAET (An online MCQ test of 120 minutes)	Rs. 95,500/- per academic sem. OR Rs.1,88,000/- per academic year	Same as above
B Tech Lateral Entry	3 Yrs.	Computer Science & Engineering, Civil Engineering, Electrical Engineering, Electronics and Communication Engineering, Mechanical Engineering	First Division in 3 years Diploma recognized by Board of Technical Education / University in corresponding branch of Engineering or B Sc (PCM) with minimum 60% marks.	On the basis of performance in GLAET (An online MCQ test of 60 minutes)	Rs. 79,500/- per academic sem. OR Rs.1,56,000/- per academic year	Same as above
B Pharm	4 Yrs.		Passed 10 + 2 examination with Physics and Chemistry as compulsory subjects along with Mathematics / Biology. With at least 50% marks in the above subjects, taken together.(Candidate must attain the age of 17 years on 31.12.2020)	On the basis of performance in GLAET (An online MCQ test of 90 minutes)	Rs. 68,000/- per academic sem. OR Rs. 1,33,000/- per academic year	A scholarship worth Rs. 25,000/- per annum for the candidates possessing more than 90% marks in Physics, Chemistry and Mathematics / Biology at 10 + 2 as per eligibility requirement. The student has to maintain a minimum CPI of 8.00 to avail the scholarship in the next year of his/her studies.
B Pharm Lateral Entry	3 Yrs.		Passed Diploma in Pharmacy from a PCI approved Institution, with at least 60% marks. (Candidate must attain the age of 18 years on 31.12.2020)	On the basis of performance in GLAET (An online MCQ test Of 90 minutes). Preference will be given to high scorers of D Pharm.	Rs. 69,500/- per academic sem. OR Rs. 1,36,000/- per academic year	NIL

Name of Course	Duration	Branch/ specialization	Eligibility*	Admission Process	Academic Fees	Scholarship
D Pharm	2 Yrs.		Passed 10+2 examination with PCB / PCM with at least 50% marks. (Candidate must have attain the age of 17 years on 31.12.2020)	On the basis of performance in GLAET (An Common Offline MCQ test of 60 minutes)	Rs. 52,500/- per academic sem. OR Rs. 1,02,000/- per academic year	NIL
B Sc (Hons.) Bio-Tech	3 Yrs.		Passed 10+2 examination with Physics, Chemistry & Biology/ Maths / Biotechnology with at least 50% marks.	On the basis of performance in GLAET (An online MCQ test of 60 minutes)	Rs. 44,000/- per academic sem. OR Rs. 85,000/- per academic year	NIL
B Sc (Hons.) Chemistry	3 Yrs.		Passed 10+2 examination with Chemistry with at least 50% marks.	On the basis of performance in GLAET (An online MCQ test of 60 minutes)	Rs. 22,000/- per academic sem. OR Rs. 41,000/- per academic year	NIL
B Sc (Hons.) Physics	3 Yrs.		Passed 10+2 examination with Physics with at least 50% marks.	On the basis of performance in GLAET (An online MCQ test of 60 minutes)	Rs. 22,000/- per academic sem. OR Rs. 41,000/- per academic year	NIL
B Sc (Hons.) Agriculture	4 Yrs.		Passed 10+2 examination with Physics, Chemistry & Biology/ Maths / Agriculture or Two years Diploma in Agriculture with at least 50% marks.	On the basis of performance in GLAET (An online MCQ test of 60 minutes)	Rs. 31,500/- per academic sem. OR Rs. 60,000/- per academic year	NIL
BCA	3 Yrs.		Passed 10+2 examination with Mathematics / Computer Science / Informatics Practices and at least 50% marks.	On the basis of performance in GLAET (An online MCQ test of 60 minutes)	Rs. 44,000/- per academic sem. OR Rs. 85,000/- per academic year	Five Percent Relaxation in the min. eligibility is provided to SC/ST Category Students.

Name of Course	Duration	Branch/ specialization	Eligibility*	Admission Process	Academic Fees	Scholarship
BBA	3 Yrs.	Human Resource, Marketing, Finance, Banking & Insurance	Passed 10+2 examination with at least 50% marks in any stream.	On the basis of performance in GLAET (An online MCQ test of 60 minutes)	Rs. 44,000/- per academic sem. OR Rs. 85,000/- per academic year	NIL
BBA Family Business	3 Yrs.	Legal Aspects of Business, Human Resource, Marketing, Finance, Business Analytics, International Business, Entrepreneurship & Family Business, Business Logistics & Supply Chain Mgmt.	Passed 10+2 examination with at least 50% marks in any stream.	On the basis of performance in GLAET (An online MCQ test of 60 minutes)	Rs. 59,500/- per academic sem. OR Rs. 1,16,000/- per annum	NIL
BBA (Hons.)	3 Yrs.	Marketing, Finance, Human Resource, Banking & Insurance, International Business, Strategy & Technology, Entrepreneurship and Family Business, Hospitality Management, Rural Management and Event Management	Passed 10+2 examination with at least 60% marks in any stream.	On the basis of performance in GLAET (An online MCQ test of 60 minutes)	Rs. 59,500/- per academic sem. OR Rs. 1,16,000/- per annum	NIL
B Com (Hons.)	3 Yrs.	Accounting and Finance, Business Administration and Law, Applied Business Economics, Banking & Insurance, International Business	Passed 10+2 examination with at least 50% marks in any stream.	On the basis of performance in GLAET (An online MCQ test of 60 minutes)	Rs. 44,000/- per academic sem. OR Rs. 85,000/- per academic year	NIL
B Com (Hons.) Global Accounting in Association with CIMA	3 Yrs.	Auditing, Stock Market Operations, Laws, Behaviourial Finance, Banking and Insurance, Business Analytics, Accounting and Finance, International Business	Passed 10+2 examination with at least 50% marks in any stream.	On the basis of performance in GLAET (An online MCQ test of 60 minutes)	Rs. 59,500/- per academic sem. OR Rs. 1,16,000/- per annum	NIL

Name of Course	Duration	Branch/ specialization	Eligibility*	Admission Process	Academic Fees	Scholarship
BA (Hons.) Economics	3 Yrs.	International Economics Banking & Finance Development Economics Industrial Economics Behaviourial Economics	Passed 10+2 examination with at least 50% marks in any stream.	On the basis of performance in GLAET (An online MCQ test of 60 minutes)	Rs. 32,500/- per academic sem. OR Rs. 62,000/- per academic year	NIL
B Ed	2 Yrs.	Education	At least 50% marks either in the Bachelor's Degree and/or Master's Degree in Sciences / Social Sciences / Humanity OR Bachelor's in Engineering or Technology with at least 55% marks.	On the basis of performance in GLAET (An Online/Offline MCQ test of 60 minutes)	Rs. 28,000/- per academic sem. OR Rs. 53,000/- per academic year	NIL
BA LLB (Hons.)	5 Yrs.		Passed 10+2 examination with at least 50% marks in any stream.	On the basis of performance in GLAET (An online MCQ test of 60 minutes)	Rs. 53,000/- per academic sem. OR Rs. 103,000/- per academic year	NIL
B COM LLB (Hons.)	5 Yrs.		Passed 10+2 examination with at least 50% marks in any stream.	On the basis of performance in GLAET (An online MCQ test of 60 minutes)	Rs. 53,000/- per academic sem. OR Rs. 103,000/- per academic year	NIL
M Tech	2 Yrs.	Civil Engineering, Computer Science & Engineering, Electrical Engineering, Electronics and Communication Engineering, Mechanical Engineering((Production), Mechanical Engineering (Design) Mechanical Engineering (Fluid & Thermal Sciences) Energy Systems	First Division in B Tech in the relevant branch OR MCA (for Computer Science). For Energy Systems, First Division in B Tech in EE, EN, EC, ME or M Sc Physics.	On the basis of performance in GLAET (An online MCQ test of 60 minutes.) Preference will be given to high scorers of GATE.	Rs. 80,500/- per academic sem. OR Rs.1,58,000/- per academic year	Scholarship for GATE and GLAET qualified candidates is Rs. 1,33,000/- per annum Scholarship for Non- GATE and GLAET qualified candidates is Rs.1,05,000 per annum Note: The student has to maintain a minimum CPI of 6.5 to avail the scholarship in the next year of his/her Studies

Name of Course	Duration	Branch/ specialization	Eligibility*	Admission Process	Academic Fees	Scholarship
M Pharm	2 Yrs.	Pharmacology, Pharmaceutics	First Division in B Pharm	On the basis of performance in GLAET (An online MCQ test of 60 minutes.) Preference will be given to high scorers of GPAT & B Pharm	Rs. 80,500/- per academic sem. OR Rs.1,58,000/- per academic year	Scholarship for GPAT and GLAET qualified candidates is Rs. 1,33,000/- per annum. Scholarship for Non- GPAT and GLAET qualified candidates is Rs.1,05,000 per annum. Note: The student has to maintain a minimum CPI of 6.5 to avail the scholarship in the next year of his/her studies.
M Sc Bio-Technology	2 Yrs.		Passed B Sc (Biotech) OR Passed B Sc (Life Sciences) with at least 50% marks.	On the basis of performance in GLAET (An online MCQ test of 60 minutes)	Rs. 59,000/- per academic sem. OR Rs.1,15,000/- per academic year	Scholarship worth Rs. 24000/- , Rs. 18000/- & Rs. 12000/- per academic sem. for top three candidates.
M Sc Microbiology & Immunology	2 Yrs.		Passed B Sc (Biotech) OR Passed B Sc (Life Sciences) with at least 50% marks.	On the basis of performance in GLAET (An online MCQ test of 60 minutes)	Rs. 59,000/- per academic sem. OR Rs.1,15,000/- per academic year	Scholarship worth Rs. 24000/- , Rs. 18000/- & Rs. 12000/- per academic sem. for top three candidates.
M Sc Chemistry	2 Yrs.		Passed B Sc OR Equivalent Degree (with Chemistry) with at least 50% marks.	On the basis of performance in GLAET (An online MCQ test of 60 minutes)	Rs. 26,500/- per academic sem. OR Rs. 50,000/- per academic year	NIL
M Sc Physics	2 Yrs.		Passed B Sc OR Equivalent Degree (with Physics) with at least 50% marks.	On the basis of performance in GLAET (An online MCQ test of 60 minutes)	Rs. 26,500/- per academic sem. OR Rs. 50,000/- per academic year	NIL

Name of Course	Duration	Branch/ specialization	Eligibility*	Admission Process	Academic Fees	Scholarship
M Sc Mathematics	2 Yrs.		Passed B Sc (With Mathematics) OR Equivalent Degree (with Mathematics) with at least 50% marks.	On the basis of performance in GLAET (An online MCQ test of 60 minutes)	Rs. 26,500/- per academic sem. OR Rs. 50,000/- per academic year	NIL
MA English	2 Yrs.		Passed BA or Equivalent degree (with English) with at least 50% marks.	On the basis of performance in GLAET (An online MCQ test of 60 minutes)	Rs. 14,000/- per academic sem. OR Rs. 25,000/- per academic year	NIL
MBA (Integrated)	5 Yrs.		Passed 10+2 examination with at least 60% marks.	On the basis of performance in GLAET (An online MCQ test of 60 minutes)	Rs. 80,500/- per academic sem. OR Rs. 1,58,000/- per academic year	NIL
MBA	2 Yrs.	Dual Specialization (Any Two to be selected) 1. Agri-Business Management 2. Hospital & Healthcare Management 3. Marketing 4. Human Resource 5. Financial Management 6. International Business Management 7. Information Technology Management 8. Retail Management 9. Development Management 10.Strategy & Technology Management 11. Operations Management 12. Banking and Financial Services 13. Business Analytics 14. Supply Chain Management	Passed Recognized Bachelor's Degree of Minimum 3 Yrs duration with at least 50% marks.	On the basis of performance in GLAET (An online MCQ test of 90 minutes). Preference will be given to high scorers of CAT, MAT, XAT, UPSEE etc	Rs. 80,500/- per academic sem. OR Rs. 1,58,000/- per academic year	NIL

Name of Course	Duration	Branch/ specialization	Eligibility*	Admission Process	Academic Fees	Scholarship
MBA (Financial Markets & Banking)	2 Yrs.	The course is having feature of special training for clearing modules of National Institute of Securities Market (NISM) Subjects offered in the domain of Financial Markets, Investments, Derivatives, Banking, and Insurance.	Passed Recognized Bachelor's Degree of minimum 3 Yrs duration with at least 50% marks.	On the basis of performance in GLAET (An online MCQ test of 90 minutes). Preference will be given to high scorers of CAT, MAT, XAT,UPSEE etc.	Rs. 1, 04,500/- per academic sem. OR Rs. 2,06,000/- per academic year	NIL
MBA - Logistics and Supply Chain Management in academic collaboration with Safeducate	2 Yrs.	The course is offered in academic collaboration with Safeducate Learning Private Limited, Subjects are offered cover core concepts of Supply Chain Management, Logistics and Transportation Management, Performance Metrics and Modeling in Supply Chain, Technological Developments in Supply Chain, Procurement and Purchasing in Supply Chain, Production and Distribution Management Distribution Management	Passed Recognized Bachelor's Degree of minimum 3 Yrs duration with at least 50% marks.	On the basis of performance in GLAET (An online MCQ test of 90 minutes). Preference will be given to high scorers of CAT, MAT, XAT, UPSEE etc.	Rs. 1, 04,500/- per academic sem. OR Rs. 2,06,000/- per academic year	NIL
MBA - Construction Management	2 Yrs.		Passed B Tech - CE, ME, EE Architecture. The candidate must have obtained at least 50% marks.	On the basis of performance in GLAET (An online MCQ test of 90 minutes)	Rs. 80,500/- per academic sem. OR Rs. 1,58,000/- per academic year	NIL
MCA	2 Yrs.		Passed Recognized Bachelor's Degree of minimum 3 Yrs duration with Mathematics as a compulsory subject at 10+2 level OR at graduate level with at least 50% marks.	On the basis of performance in GLAET (An online MCQ test of 90 minutes)	Rs. 64,000/- per academic sem. OR Rs. 1,25,000/- per academic year	NIL

Name of Course	Duration	Branch/ specialization	Eligibility*	Admission Process	Academic Fees	Scholarship
Diploma in Engineering	3 Yrs.	Civil Engineering, Computer Engineering , Electrical Engineering, Mechanical Engineering, Chemical Engineering, Electronics and Communications Engineering	Passed 10th examination with at least 40% marks (with Mathematics as a compulsory subject).	On the basis of performance in GLAET (An Online/Offline MCQ test of 60 minutes)	Rs. 32,500/- per academic sem. OR Rs. 62,000/- per academic year	NIL
Post-Graduate Diploma in YOGA	1 Yr.		Passed Recognized Bachelor's Degree of minimum 3 yrs duration with at least 50% marks.	On the basis of fulfillment of eligibility criteria	Rs. 21,500/- per academic sem. OR Rs. 40,000/- per academic year	NIL
Post-Graduate Diploma in Fitness Management	1 Yr.		Passed Recognized Bachelor's Degree of minimum 3 yrs duration with at least 50% marks.	On the basis of merit	Rs. 21,500/- per academic sem. OR Rs. 40,000/- per academic year	NIL
Short Term Diploma	1 Yr.	Advanced Diploma in Tool & Die Making Advanced Diploma in CNC and CAD / CAM Certificate Course in Tool & Die Making Certificate Course in CNC and CAD / CAM Certificate Course in Computer Hardware and Networking	Passed B Tech / Diploma in Mechanical Engineering with at least 50% marks. Passed 10+2 examination with at least 40% marks.	On the basis of fulfillment of eligibility criteria	Rs. 26,500/- per academic sem. OR Rs. 50,000/- per academic year	NIL

Name of Course	Duration	Branch/ specialization	Eligibility*	Admission Process	Academic Fees	Scholarship
Ph.D.	3 Yrs.	Electrical Engineering, Mechanical Engineering, Electronics & Communication Engineering, Civil Engineering, Computer Science Engineering, Pharmacy (Pharmacology, Pharmaceutical Chemistry & Pharmaceutics), Biotechnology, Immunology, Microbiology, Applied Physics, Applied Chemistry, Mathematics, English, Management, and Education	Master's Degree in relevant / appropriate discipline / field / subject with first division or minimum cumulative grade point average of 6.75 on 10 point scale	The applicant will have to qualify the Ph.D. entrance test conducted by the University or central bodies such as UGC / CSIR etc. The qualified applicant will be interviewed by the respective departmental research committee.	Rs. 31,500/- per academic sem. OR Rs. 60,000/- per academic year	A Teaching Assistantship of Rs. 25,000/- per month will be given to selected research scholars.

***Five Percent Relaxation** on the minimum eligibility criteria is provided to SC/ST category students by the University.

Fee Structure 2020

Course	Branch	Duration	Fee Structure 2020 (Per Academic Year)				
			1st Year	2nd Year	3rd Year	4th Year	5th Year
B. Tech.	CS, EC, EE, ME, Civil, Automobile Engineering & Mechatronics Engineering	4 Years	1,58,000/-	1,61,000/-	1,64,000/-	1,67,000/-	
B. Tech.-CS with IBM	DA, CCV,CSF, AIML	4 Years	1,93,000/-	1,96,000/-	1,99,000/-	2,02,000/-	
B. Tech. CS with DCS	Industrial IOT	4 Years	1,88,000/-	1,91,000/-	1,94,000/-	1,97,000/-	
B. Tech. ME with DCS	Smart Manufacturing	4 Years	1,88,000/-	1,91,000/-	1,94,000/-	1,97,000/-	
B. Tech. (Lateral Entry)	EC, EE, ME, CS, CE	3 Years	-	1,56,000/-	159,000/-	1,62,000/-	
M. Tech.		2 Years	1,58,000/-	1,61,000/-	-	-	
B. Pharm.		4 Years	1,33,000/-	1,36,000/-	1,39,000/-	1,42,000/-	
B. Pharm. (Lateral Entry)		3 Years	-	1,36,000/-	1,39,000/-	1,42,000/-	
D. Pharm.		2 Years	1,02,000/-	1,04,000/-	-	-	
M. Pharm.		2 Years	1,58,000/-	1,61,000/-	-	-	
BBA		3 Years	85,000/-	87,000/-	89,000/-		
BBA(H)		3 Years	1,16,000/-	1,18,000/-	1,20,000/-		
BBA (Family Business)		3 Years	1,16,000/-	1,18,000/-	1,20,000/-		
B.Com. (Hons.) GA With CIMA		3 Years	1,16,000/-	1,18,000/-	1,20,000/-		
B.Com. (Hons.)		3 Years	85,000/-	87,000/-	89,000/-		
B.A. (Hons.) Economics		3 Years	62,000/-	64,000/-	66,000/-		
MBA Integrated*		5 Years	1,58,000/-	1,61,000/-	1,64,000/-	1,67,000/-	1,70,000/-
MBA		2 Years	1,58,000/-	1,61,000/-			
MBA (Logistics & Supply Chain Management)		2 Years	2,06,000/-	2,09,000/-			
MBA (Financial Markets & Banking)		2 Years	2,06,000/-	2,09,000/-			
MBA in Construction Management		2 Years	1,58,000/-	1,61,000/-			
BCA		3 Years	85,000/-	87,000/-	89,000/-		
MCA		2 Years	1,25,000/-	1,28,000/-			
B.Sc. (Hons.) Biotech		3 Years	85,000/-	87,000/-	89,000/-		
M.Sc. (Biotech)		2 Years	1,15,000/-	1,18,000/-			
M.Sc. (Microbiology)		2 Years	1,15,000/-	1,18,000/-			
B.Sc. (Hons.) Agriculture		4 Years	60,000/-	62,000/-	64,000/-	66,000/-	
B.Sc. (Hons.) Chemistry		3 Years	41,000/-	42,000/-	43,000/-		
B.Sc. (Hons.) Physics		3 Years	41,000/-	42,000/-	43,000/-		
M.Sc. (Chemistry)		2 Years	50,000/-	51,000/-			
M.Sc. (Physics)		2 Years	50,000/-	51,000/-			
M.Sc. (Mathematics)		2 Years	50,000/-	51,000/-			
M.A. (English)		2 Years	25,000/-	26,000/-			
B.A. LLB*		5 Years	1,03,000/-	1,06,000/-	1,09,000/-	1,12,000/-	1,15,000/-
B.Com. LLB*		5 Years	1,03,000/-	1,06,000/-	1,09,000/-	1,12,000/-	1,15,000/-
B.Ed.		2 Years	53,000/-	53,000/-			
Diploma Engineering		3 Years	62,000/-	63,000/-	64,000/-		
Diploma Short term Courses		1 Year	50,000/-				
Post-Graduate Diploma		3 Years	40,000/-				
Ph.D.		3 Years	60,000/-	60,000/-	60,000/-		

* Fees of above mentioned courses are subject to change.

Additional Charges:

Caution Money (To be paid in the first year of the course, refundable on the successful completion of course)	Examination Charges (Per Academic Year, for all courses)	Alumni Association Fee (to be paid at once in the first year of the course)
Rs. 5000/- (for Diploma in Engineering/D. Pharm. /B. Ed)	Rs. 6000/-	Rs. 1000/-
Rs. 10000/- (for all other courses, except Diploma & B. Ed.)		

* Option to deposit fee in two parts with Rs. 1500 /- extra per semester.

Hostel & Mess Fee

Hostel Fee: Subject to availability of rooms as hostel rooms are limited & will be allocated on first come- first serve basis.

Type of Room	First Year					Second Year				
	Triple Occupancy	Double Occupancy	Single Occupancy	Wing Single Occupancy (AC)	Wing Single Occupancy (Non AC)	Triple Occupancy	Double Occupancy	Single Occupancy	Wing Single Occupancy (AC)	Wing Single Occupancy (Non AC)
For Boys	50,000/-	60,000/-	65,000/-	NA	NA	NA	62,000/-	67,000/-	92,000/-	72,000/-
For Girls	50,000/-	60,000/-	NA	NA	NA	52,000/-	62,000/-	NA	NA	NA
Type of Room	Third Year					Fourth Year				
	Triple Occupancy	Double Occupancy	Single Occupancy	Wing Single Occupancy (AC)	Wing Single Occupancy (Non AC)	Triple Occupancy	Double Occupancy	Single Occupancy	Wing Single Occupancy (AC)	Wing Single Occupancy (Non AC)
For Boys	NA	64,000/-	69,000/-	94,000/-	74,000/-	NA	66,000/-	71,000/-	96,000/-	76,000/-
For Girls	54,000/-	64,000/-	NA	NA	NA	56,000/-	66,000/-	NA	NA	NA

***Fifth Year Hostel Charges for B.A. LLB, B.Com LLB & MBA integrated courses will be increased by Rs. 2000/- for all types of rooms in the hostel.**

Hostel Security: Rs. 5000/- in the first year of the course is to be paid additionally (refundable on vacating the hostel on successful completion of course).

Mess Fee: Rs. 34,000/- per annum (as advance mess run on actual expenses basis)

Note: To avail hostel in the subsequent session only double/triple occupancy rooms are available in second year. Students have to submit their full hostel fee latest by February every year. Hostel will be provided for full academic year only. Above hostel fee is for regular academic session only.

Bus Fee:

The following Bus fee is for regular academic session only.

Location	Stoppage	Amount
From Mathura City	Krishnapuri, Sadar Bazar, Tank Chauraha, Dampier Nagar, Bharatpur Gate, Deeg Gate, Roopam Cinema, Masani, and Kalyanam Karoti	19,500/-
	Bajrang Dharam Kanta, Baldev Puri, Manas Nagar, Janakpuri, Shanti Nagar, New Bus Stand, Krishna Nagar, Goverdhan Chauraha, and Radha Puram	
	Old RTO, Jai Gurudev Temple, Mandi Chauraha, and Sonkh Road	
	Ganeshra, Radha Puram Estate, Radha Puram	
	Moti Kunj, Chandanvon, Dholi Pyou, Narholi Thana	
	Radha City, Shivasha State, Shri Ji Gardan	
From Vrindavan	Chungi Chauraha, Atalla Chungi, Kailash Nagar, Railway Over Bridge, Chaitnanya Vihar, Hari Nikunj Chauraha, Keshav Kunj, and Iskon Temple	18,500/-
From Township & Surrounding Areas	Aurangabad Chauraha, Veterinary College, Civil Line, Police Line	21,500/-
	Township, Nawada, Balaji Puram, Sudhama Puri	
From Kosi- Kalan	Kosi, Chhata, Akabar Pur	21,500/-
From Baldev	Baldev To GLA	23,500/-
From Raya	Raya To GLA	23,500/-
From Goverdhan	Goverdhan To GLA	23,500/-
From Mant	Mant To GLA	23,500/-

***Subject to revision every year**

• **Note:** Students may be asked to register for the next academic year anytime in between 1 May and 31 July every year, where registration means depositing all types of fees.

• Students, placed as early joiners, will have to deposit academic and hostel fees for the whole year.



Scholarship 2020

1. Scholarship for Meritorious students:

A For B Tech students: A scholarship worth ₹ 33,000/- and ₹ 25000/- per annum for the candidates possessing more than 90% marks and 80-89% marks respectively in Physics, Chemistry & Mathematics at 10+2 level as per eligibility requirements.

B On the basis of JEE-MAINS score#: Candidates eligible for scholarship on the basis JEE-MAINS Percentile are as mentioned below:

JEE-MAINS Percentile	Scholarship amount
95-100	₹ 74,000/-
90-94.99	₹ 37,000/-
85-89.99	₹ 20,000/-

Note: The student has to maintain a minimum CPI of 8.00 to avail the scholarship in the next year of his/her studies.

C For B Pharm students: A scholarship worth ₹ 25,000/- per annum for the candidates possessing more than 90% marks in Physics, Chemistry and Mathematics / Biology at 10+2 as per eligibility requirements.

Note: The student has to maintain a minimum CPI of 8.00 to avail the scholarship in the next year of his/her studies.

D For M Tech students:

1. Scholarship for GATE qualified candidates is ₹ 1,33,000 per annum.

2. Scholarship for Non-GATE and GLAET qualified candidates is ₹ 1,05,000 per annum.

Note: The student has to maintain a minimum CPI of 6.5 to avail the scholarship in the next year of his/her studies.

E For M Pharm students:

1. Scholarship for GPAT qualified candidates is ₹ 1,33,000 per annum.

2. Scholarship for Non-GPAT and GLAET qualified candidates is ₹ 1,05,000 per annum

Note: The student has to maintain a minimum CPI of 6.5 to avail the scholarship in the next year of his/her studies.

F For M Sc students: Scholarship worth ₹ 24000/- , ₹ 18000/- & ₹ 12000/- per semester for top three candidates.

G For PhD students: A Teaching Assistantship of ₹ 25,000/- per month will be given to selected full time research scholars in all streams.

2. Scholarship for general & OBC candidates (Economically weak):

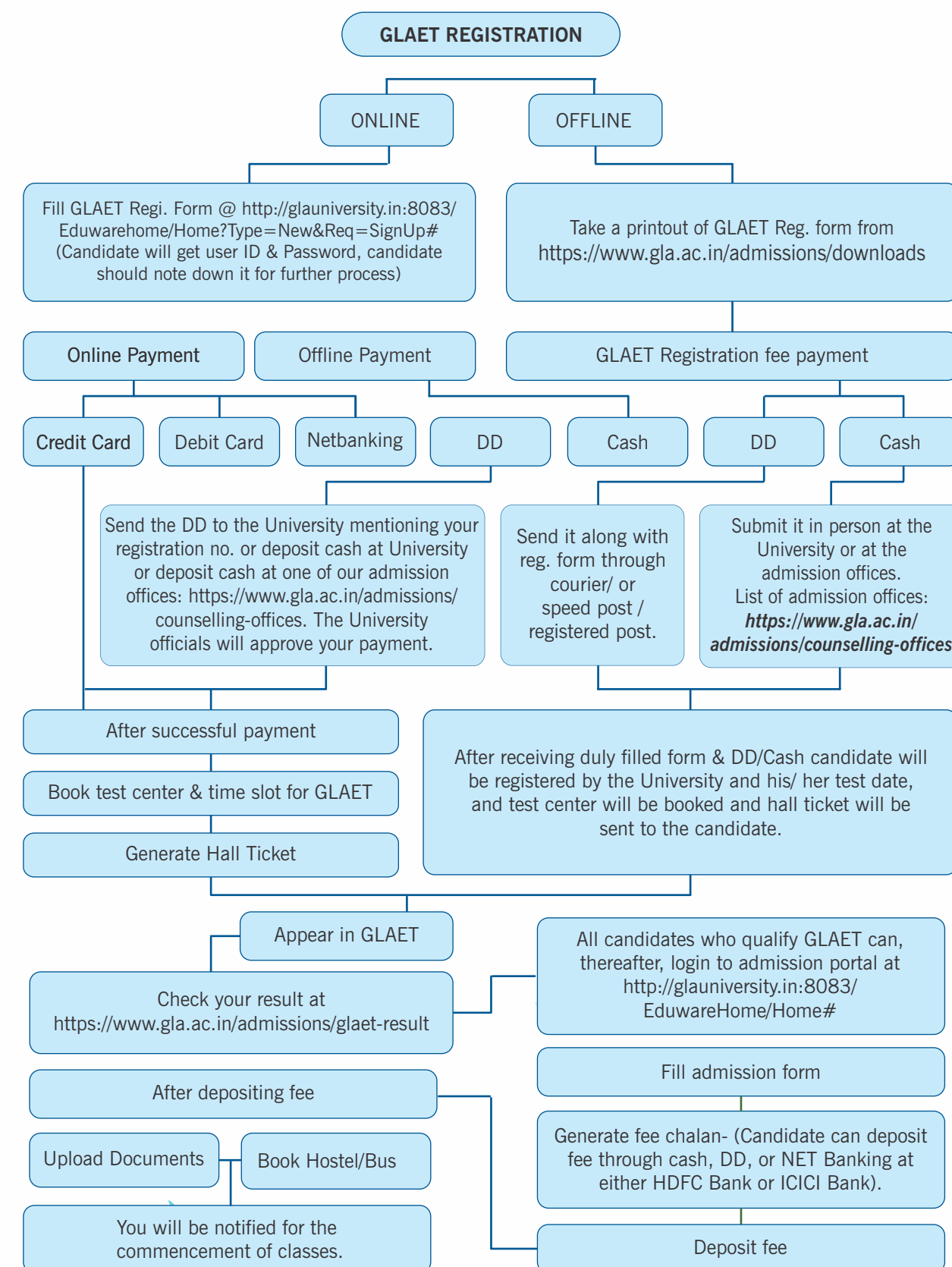
Those students whose parents' annual income is less than ₹ 2 Lakhs are eligible to avail scholarship through social welfare department (Samaj Kalyan Vibhag) of UP Govt.

3. Scholarship for SC/ST Candidates:

Those students whose parents' annual income is less than ₹ 2 lakhs are eligible to avail scholarship through social welfare department (Samaj Kalyan Vibhag) of UP Govt.

*Registration Test Fee ₹ 700/- for all other courses and ₹ 500/- for DPharm, Diploma in Engg., Short Term course and BEd.

Admission Procedure at a Glance



1
GLA
Rank
No.

**in UP* amongst the
Best Private Universities**

Survey 2019 by


दैनिक जागरण

& 
THE TIMES OF INDIA

*For more information, please visit: www.gla.ac.in



GLA
UNIVERSITY
MATHURA
Recognised by UGC Under Section 2(f)

Accredited with **A** Grade by **NAAC**

Campus: 17 Km stone, NH-2, Mathura-Delhi Road, P.O.- Chaumuhan, Mathura - 281 406 (U.P) INDIA

Ph.:- +91-5662-250900, 25909, 241489, +91-9927064017, Fax: +91 -5662-241687

E-mail: admission@gla.ac.in, Website: www.gla.ac.in

Noida Office: H-50 (First Floor), Sector-63, Noida - 201 301 (U.P), India